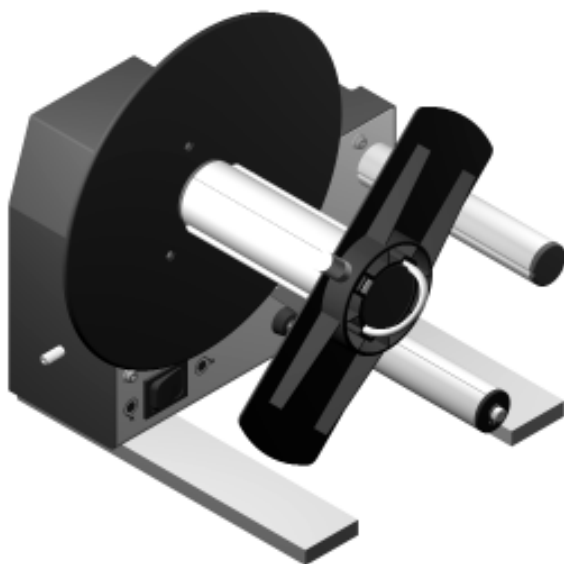




# **External Rewinder ER1**

**for Transfer Printer  
BP-PR PLUS Series**

## **Operator's Manual**



## Product Description

The External Rewinder **ER1** is a peripheral device for BP-PR PLUS printers. To handle large print jobs, the external rewinder allows you to rewind complete rolls of label material.

The rewinder is powered and controlled directly by the peripheral port of the printer. The rewinder operates just then if the printer is carrying out a paper feed. After completion of the paper feed the rewinder runs maximum one more second.

## Technical Specification

<b>Label Width</b>	up to 4.7 in (120 mm)
<b>Rewind Diameter</b>	max. 8.19 in (210 mm)
<b>Core Diameter</b>	1.56 in (40 mm) on rewind axle 1.56 in (40 mm) on cardboard core with adapter 3 in (76 mm) on cardboard core
<b>Rewind Speed</b>	2 - 12 ips (50 - 300 mm/s)
<b>Label Rewinding</b>	Labels inside or outside
<b>Operating Temperature</b>	50°F - 95°F (10 bis 35°C ) at 10 - 85 % humidity, non condensing
<b>Transport and Storage Temperature</b>	4°F - 122°F (-20 bis 50°C) at 10 - 85 % humidity, non condensing
<b>Dimensions of the Rewinder</b>	Height : 11.0 in (280 mm) Width : 9.8 in (250 mm) Depth : 11.1 in (285 mm)
<b>Weight</b>	ER1 : 9.9 lbs (4,5 kg)

## Safety Instructions



### CAUTION !

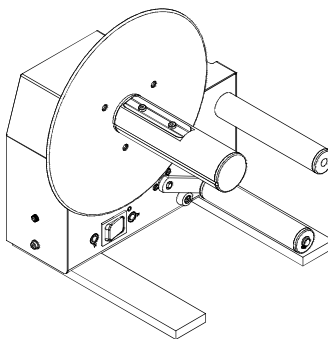
- The printer must be switched off before attaching the rewinder !
- During operation, the rotating rewind axle with the mounted flange is accessible. Ensure that loose hanging jewellery, hair etc. are kept clear of the moving parts.  
Risk of injury from moving parts !
- Do not change the rewinding direction when the rewind axle is turning !

## Delivery Contents

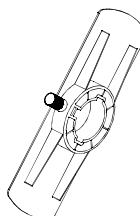


**NOTICE !**  
**Retain packing material for later use !**

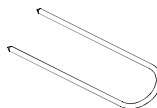
1 - Rewinder



2 - Flange



3 - Clamp



4 - 2 Rewind Axle Adapter



5 - Operator's Manual



**Fig. 1 Delivery contents**

## Mounting the External Rewinder

The printer is normally shipped with the front cover (6) mounted. In order to install the rewinder the front cover has to be removed.

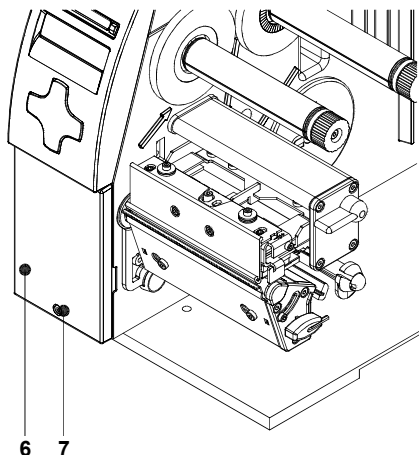


Fig. 2 Removal of the front cover



### CAUTION!

The printer must be switched off when mounting the rewinder. Otherwise it can cause damages on printer and rewinder.

1. Loosen the screw (7).
2. Remove the front cover (6).

The External Rewinder is mounted on the printer so it is not necessary to adjust the device.

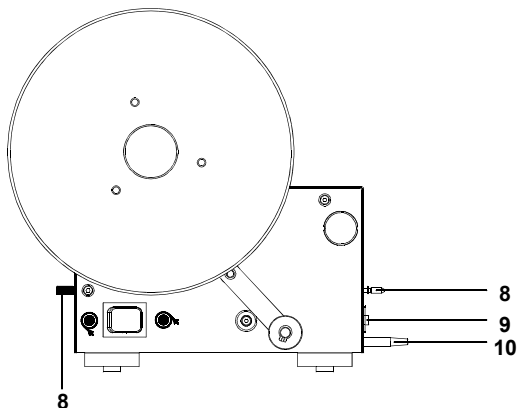
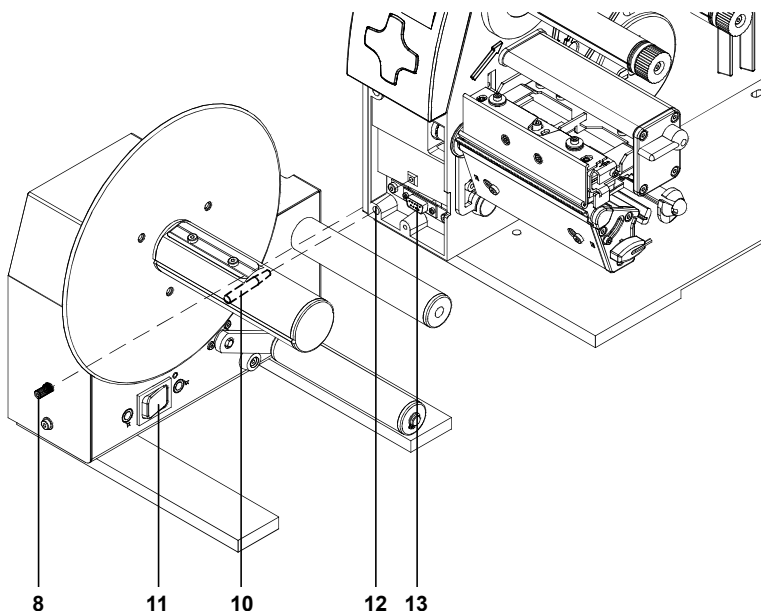


Fig. 3 Components to connect the Rewinder



**Fig. 4 Mounting the rewriter**

3. Insert the pin (10) of the rewriter into the hole (12) of the printer. Press the rewriter against the printer. That way the plug (9) of the rewriter will be connected to the peripheral port (13) of the printer.
4. Secure the rewriter by tightening the spindle (8).

## Selection of the Rewind Method

It is possible to rewind inside and outside wound labels with the rewriter. But before rewinding the method has to be set.



### CAUTION!

**To avoid damages, do not change the rewinding direction, when the rewind axle is turning !**

Set the switch (11) to the required manner of rewinding :

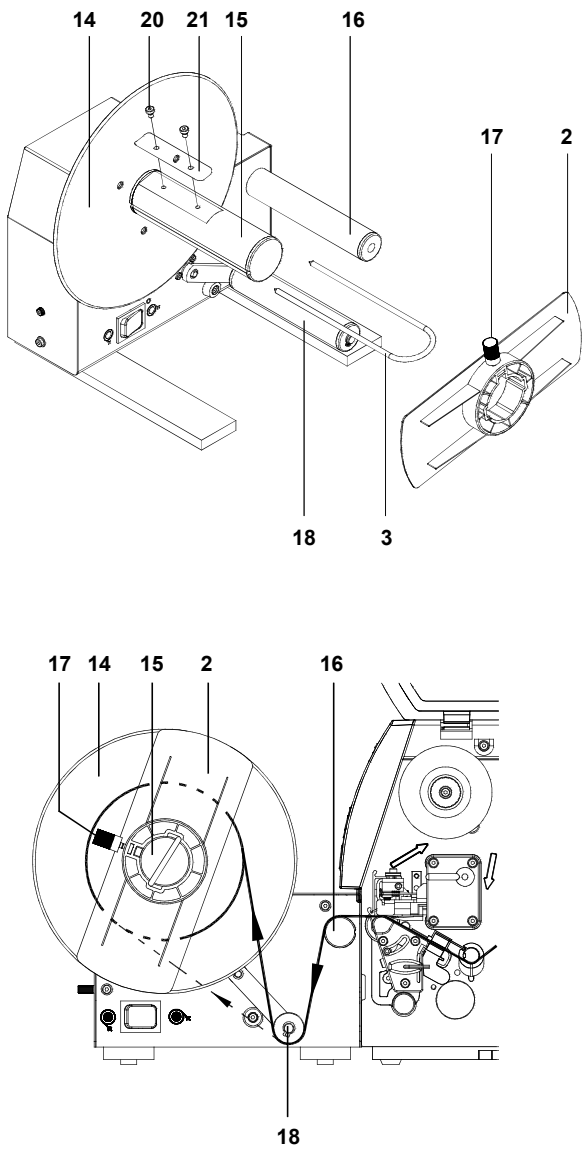


- Rewinding with labels inside



- Rewinding with labels outside

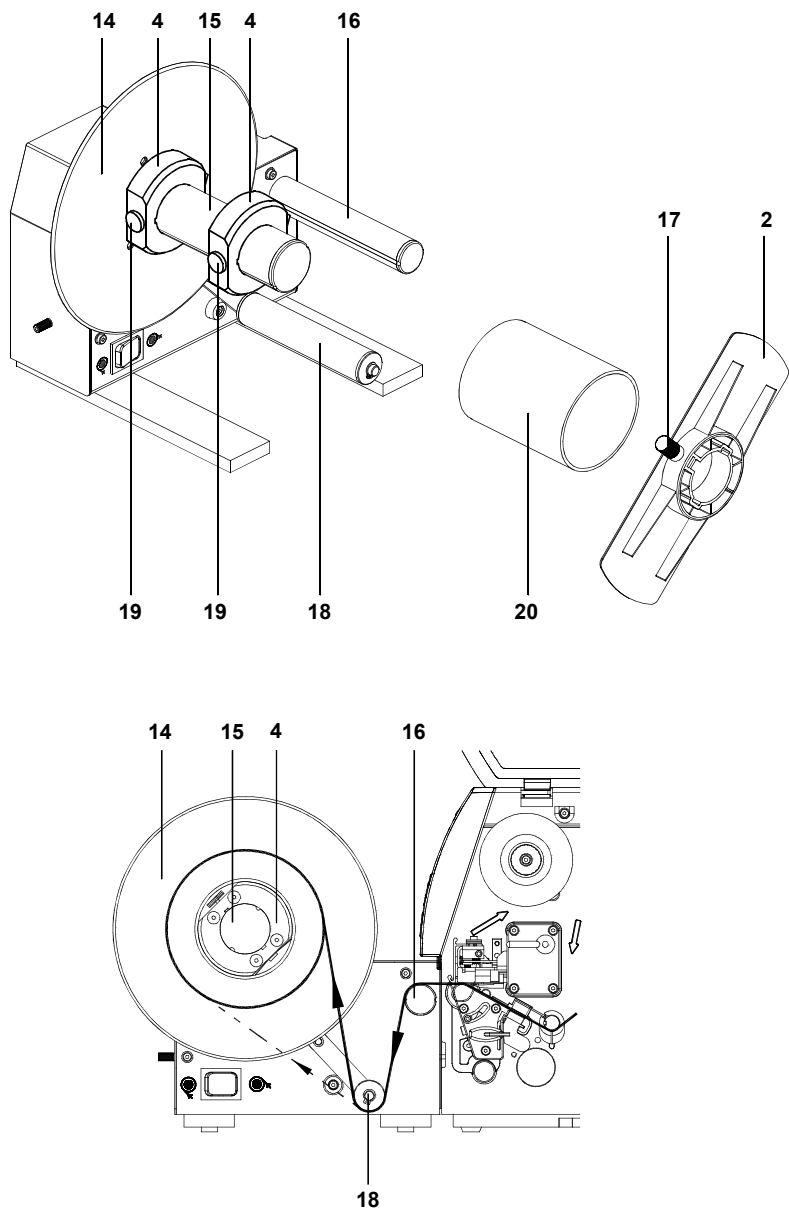
**Rewinding directly onto the Rewind Axle**



**Fig. 5    Rewinding directly onto the rewind axle**

1. To rewind directly onto the rewind axle the spring **(21)** must be removed.  
Loosen the screws **(20)** and remove the spring **(21)**.
2. Feed the label strip over the guide bar **(16)** and under the roller **(18)** to the rewind axle **(15)**. Ensure that the label strip is even with the disc **(14)**.
3. Attach the label strip appropriately to the rewind axle by sliding the clamp **(3)** over the label strip with the clamp set in the groove of the rewind axle **(15)**.  
Consider the required method of rewinding :
  - The broken line is valid for inside wound labels.
  - The full line is valid for outside wound labels.
4. Slide the clamp **(3)** as far as possible towards the disc **(14)**.
5. Slide the flange **(2)** onto the rewind axle so that it slightly touches the label strip. The label strip must be able to move slightly between the disc and the flange.
6. Tighten the knurled screw **(17)** on the flange.
7. The rewinder is ready for operation. If the printer carries out a paper feed the rewinder also starts to operate.

**Rewinding onto 3 in (76 mm) Cardboard Core**

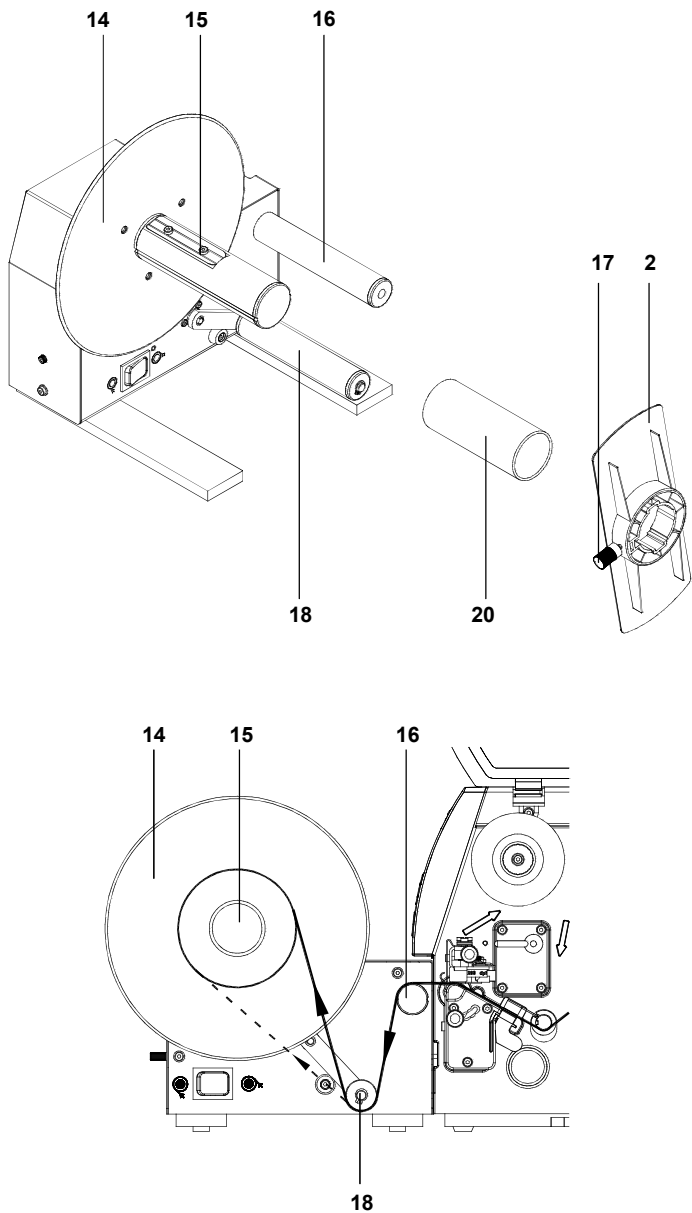


**Fig. 6 Rewinding onto 3 in (76 mm) cardboard core  
(drawing below without flange)**



1. For this operation mode, the spring must be removed from the rewind axle as described in the previous chapter.  
Loosen the screws and remove the spring.
2. Use a cardboard core **(20)** which is about .04 in (1 mm) wider than the label strip.
3. Put the first axle adapter **(4)** onto the rewind axle **(15)** and slide it up to the disc **(14)**.  
Tighten the knurled screw **(19)**.
4. Put the second axle adapter **(4)** onto the rewind axle and slide it towards the first adapter until the clearance between the outer edge of it and the disc **(14)** is a little less than the width of the cardboard core.  
Tighten the knurled screw **(19)**.
5. Slide the cardboard core **(20)** over the two adapters **(4)** until it is touching the disc **(14)**.
6. Feed the label strip over the guide bar **(16)** and under the roller **(18)** up to the cardboard core **(20)**.  
Ensure that the label strip is even with the disc **(14)**.
7. Using adhesive tape or label, affix the end of the label strip to the cardboard core.  
Consider the required method of rewinding :
  - The broken line is valid for inside wound labels.
  - The full line is valid for outside wound labels.
8. Slide the flange **(2)** onto the rewind axle **(15)** until it stops
9. Tighten the knurled screw **(17)** on the flange.
10. The rewinder is ready for operation. If the printer carries out a paper feed the rewinder also starts to operate.

**Rewinding onto 1.56 in (40 mm) Cardboard Core**



**Fig. 7 Rewinding onto 1.56 in (40 mm) cardboard core  
(drawing below without flange)**



### **NOTICE !**

**For that rewind mode the spring on the rewind axle must be mounted !**

1. Use a cardboard core **(20)** which is about .04 in (1 mm) wider than the label strip
2. Put the cardboard core **(20)** onto the rewind axle **(15)**.
3. Feed the label strip over the guide bar **(16)** and under the roller **(18)** up to the cardboard core **(20)**.  
Ensure that the label strip is even with the disc **(14)**.
4. Using adhesive tape or label, affix the end of the label strip to the cardboard core.  
Consider the required method of rewinding :
  - The broken line is valid for inside wound labels.
  - The full line is valid for outside wound labels.
5. Slide the flange **(2)** onto the rewind axle **(15)** until it stops.  
When using small labels it is possible that the cardboard core not covers the spring over the whole length. In this case the groove on the flange must be aligned so that it fits on the spring of the rewind axle.
6. Tighten the knurled screw **(17)** on the flange.
7. The rewinder is ready for operation. If the printer carries out a paper feed the rewinder also starts to operate.



Gesellschaft für Computer-  
und Automations-  
Bausteine mbH  
Wilhelm-Schickard-Str. 14  
D-76131 Karlsruhe

## EU - Conformity Declaration

We declare herewith that as a result of the manner in which the machine designated below was designed, the type of construction and the machines which, as a result have been brought on to the general market comply with the relevant fundamental regulations of the EU Rules for Safety and Health. In the event of any alteration which has not been approved by us being made to any machine as designated below, this statement shall thereby be made invalid.

Description:  
**External Rewinder**

Type:  
**External Rewinder ER1**

Applied EU Regulations and Norms:

- **EC Machinery Regulations**

- Machine Safety

**98/37/EU**

EN ISO 12100-1:2003

EN ISO 12100-2:2003

- **EC Low Voltage Regulations**

- Data and Office Machine Safety

**73/23/EEC**

EN 60950-1:2001

- **EC Electromagnetic Compatibility Regulations**

- Threshold values for the Interference  
of Data Machines

**89/336/EEC**

EN 55022:1998 + A1:2000 +

A2:2003 - Class A

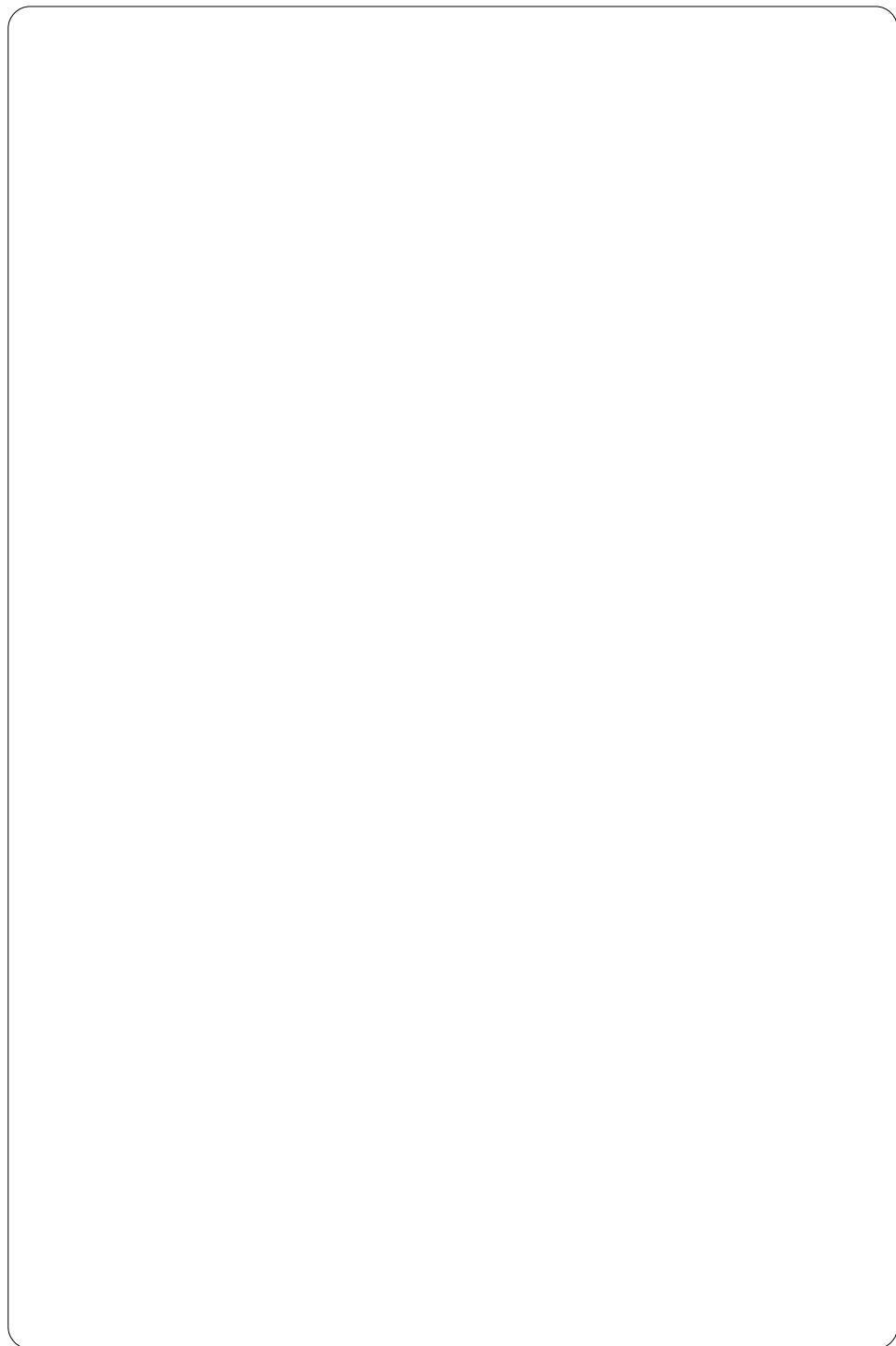
This declaration is only valid when the rewinder is used together with a printer of the BP-PR PLUS Series.

Signed for, and on behalf of, the Manufacturer :

cab Produkttechnik Sömmerda  
Gesellschaft für Computer-  
und Automationsbausteine mbH  
99610 Sömmerda

Sömmerda, 10.04.06

Erwin Fascher  
Managing Director





**W.H. Brady**  
**Lindestraat 21**  
**Industriepark C3**  
**9240 Zele Belgium**  
**Tel.: +32 52 457 811**  
**e-mail: support@brady.be**



**Identification Solutions Division**  
**6555 W. Good Hope Road**  
**PO Box 2131**  
**Milwaukee, WI 53201 U.S.A.**  
**Phone: 1-800-537-8791**  
**Fax: 1-800-292-2289**

All specifications about delivery, design, performance and weight are given to the best of our current knowledge and are subject to change without prior notice.